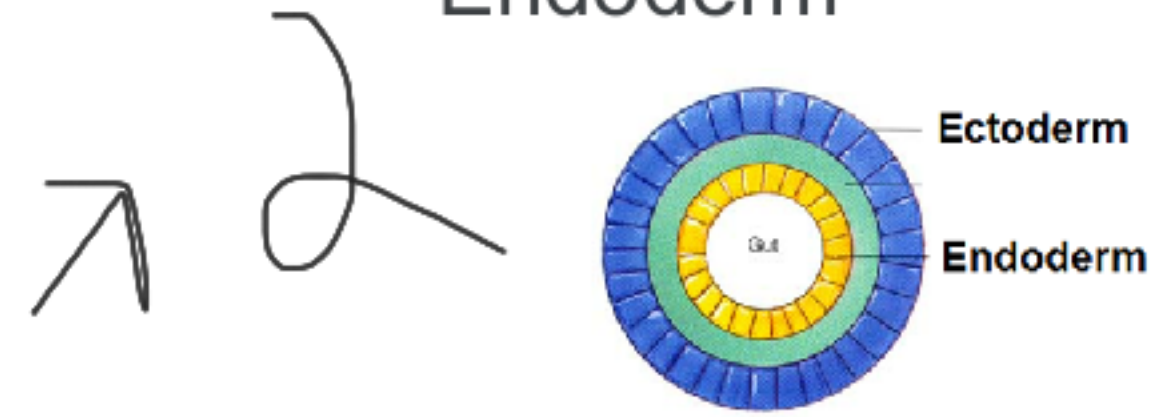


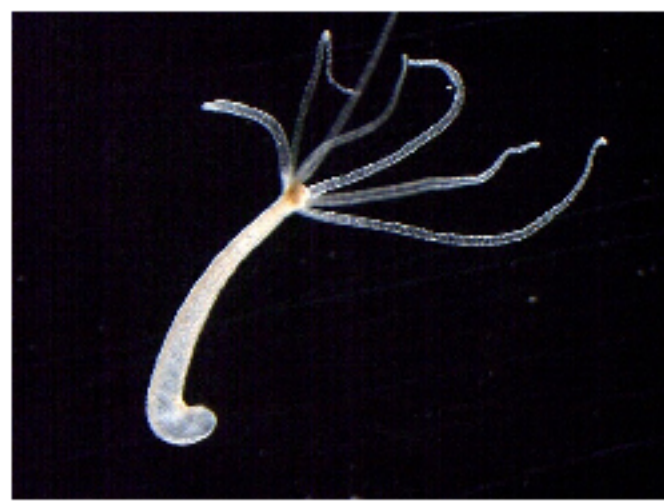
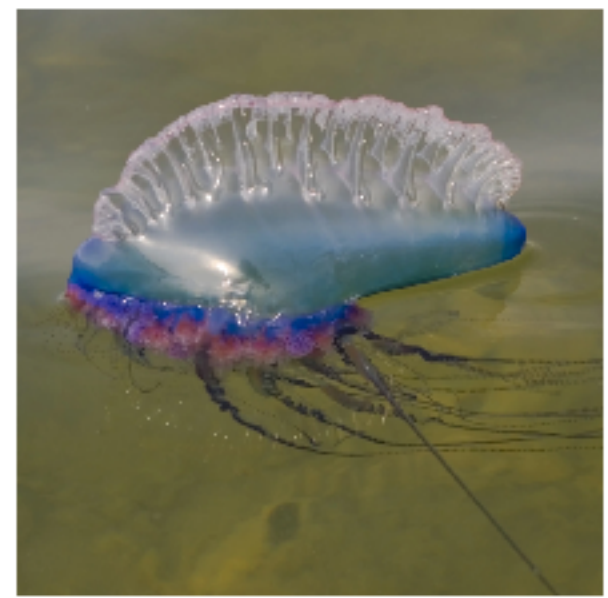
2 germ layers:
Ectoderm &
Endoderm



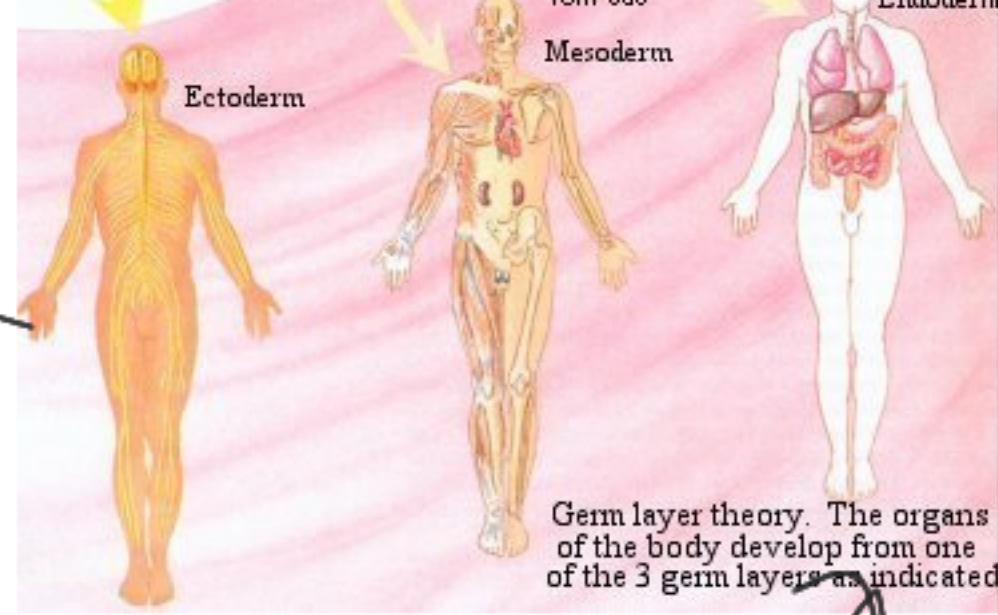
Diploblastic



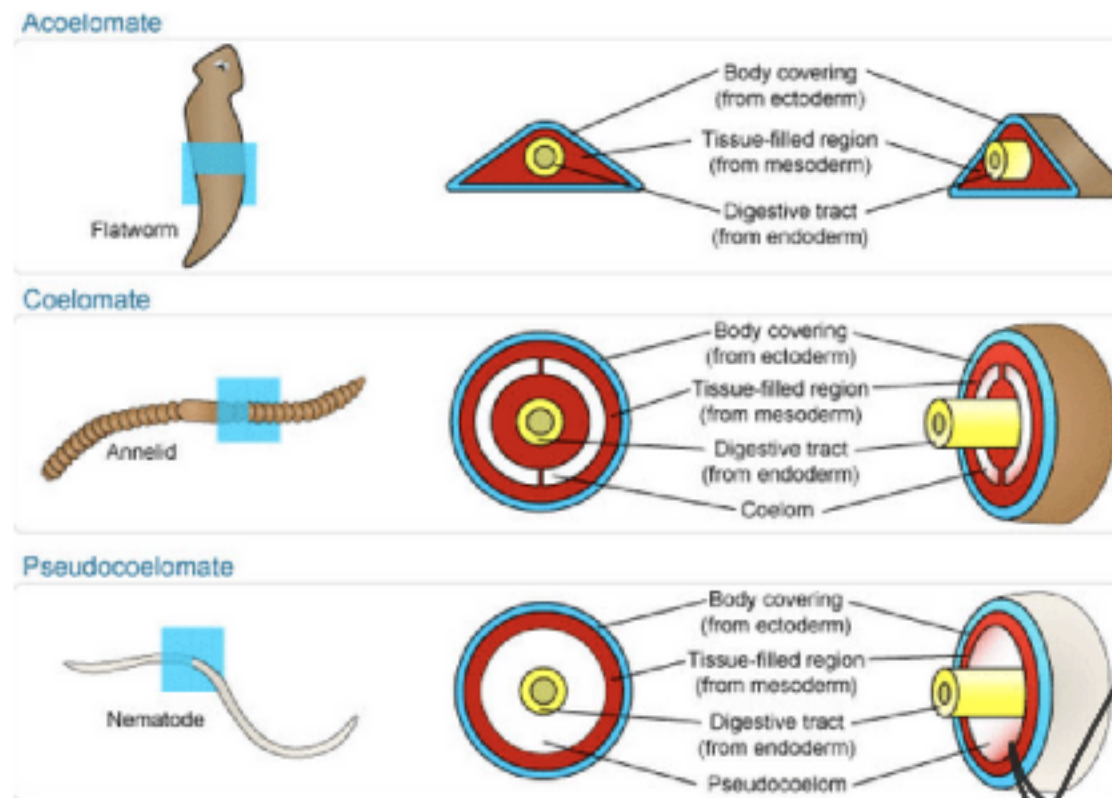
Cnidarians!



3) Coelomate
 -Have a true body cavity
 -most animals*



3 germ layers:
 ectoderm,
 mesoderm,
 endoderm



*
Triploblastic

2) Pseudocoelomate
 -Roundworms
 (nematodes)
 -Have a body cavity, not
 completely lined with
 mesodermal tissue

1) Acelomate:
 -flatworms
 (platyhelminthes)
 -no body cavity
 -"solid bodied animals)

different body
 plans



Bilateral Symmetry

- anterior/posterior
- right/left
- dorsal ventral



divides animal into right and left sides

most animals



Radial Symmetry

- Oral/Aboral
- Divides animal into mirror images



Symmetry

arrangement of body parts

Asymmetry

